

## Electronically Filed

Dominion Energy South Carolina, Inc.  
DESC Power Generation  
220 Operation Way, MC B223, Cayce SC 29033  
DominionEnergySC.com



January 30, 2026

Debbie-Anne Reese, Secretary  
Federal Energy Regulatory Commission  
888 First Street, N. E.  
Washington, D. C. 20426

Subject: Dominion Energy South Carolina, Inc.  
Saluda Hydroelectric Project  
FERC Project No. 516  
Annual Easement Report [License Article 30(c)]

Dear Secretary Reese:

Dominion Energy South Carolina (DESC), Licensee, hereby files electronically its Annual Easement Report for the Saluda Hydroelectric Project (FERC Project No. 516), in accordance with the requirements of Article 30(c) of the Project License.

The following easements were granted on Project 516 lands during the year 2025:

1. A temporary right of way easement to the South Carolina Dept. of Transportation (SCDOT), containing 1,033.76 square feet, more or less, and all improvements, thereon, and a permanent easement also to the SCDOT containing 21,172 square feet (0.486 acre) of land, more or less, and all improvements thereon, if any, located in Newberry County, Project 516, on the Mark & Daisy R. Hawkins tract, Option 252-A. (See Attachment 1, Figure 1.)
2. A perpetual, non-exclusive easement granted to Amenity Island property owners for ingress, egress (vehicular and otherwise) and utility installation, across, over, and through the DESC Causeway Parcel shown as that 0.12 Acre Easement area on that certain plat entitled Amenity Island Causeway prepared for Dominion Energy South Carolina, Inc. dated May 15, 2025 in Richland County, on the Lowman Home tract, Option 386. (See Attachment 1, Figure 2.)

If you have any questions about this easement report, please contact me at (803) 217-7322 or [raymond.ammarell@dominionenergy.com](mailto:raymond.ammarell@dominionenergy.com).

Yours very truly,

A handwritten signature in blue ink that reads "Raymond R. Ammarell".

Raymond R. Ammarell, P.E., Manager  
Dam Safety and Civil Engineering

RRA/ra  
enclosures

c: J. W. Miller/ H. E. Delk, Jr./I. N. Griffin/SH File  
A. I. Bresnahan/A. R. Rollins/O. E. Owen  
O. Brown/J. E. Brown  
W. Quinn/B. D. Kelso/R. A. Wright/B. McDonald  
Corporate Records

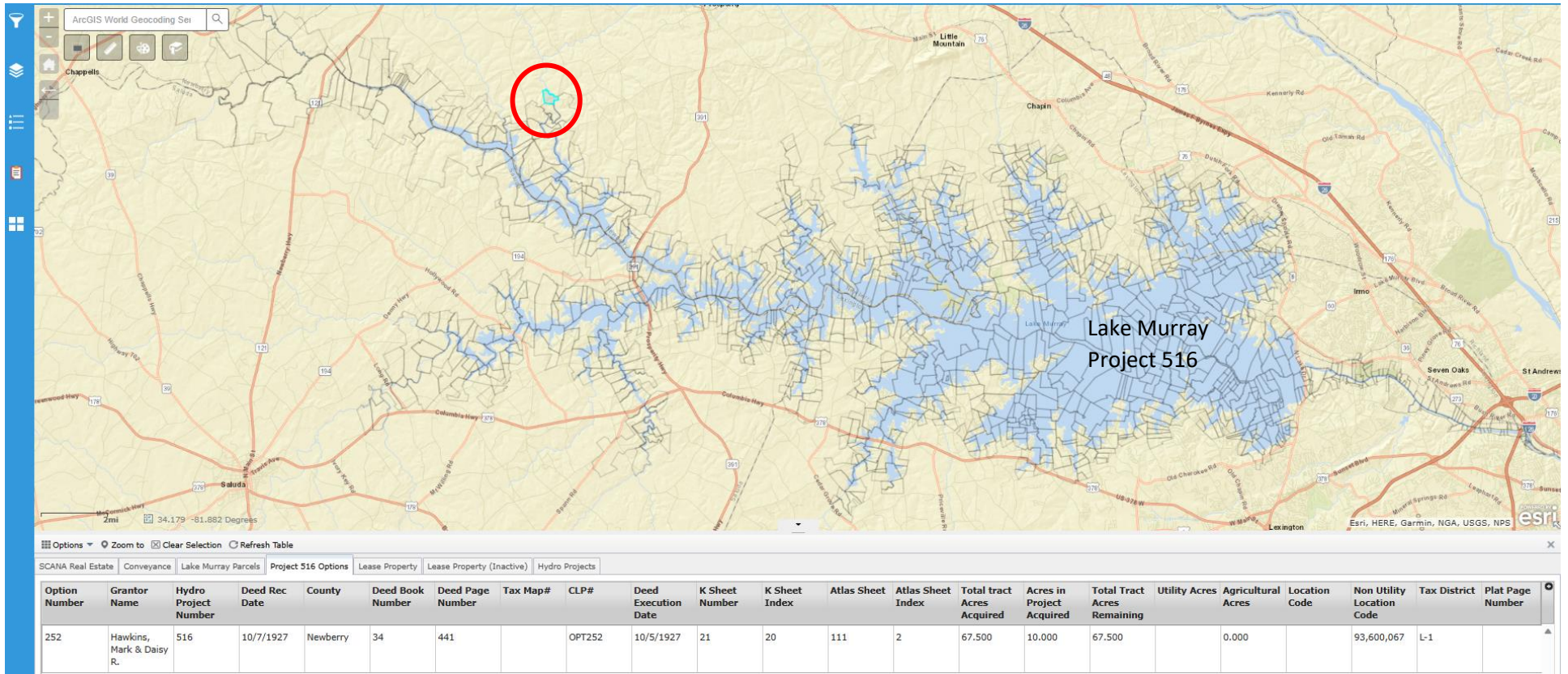


Figure 1. Location Map Mark & Daisy Hawkins Tract, Option 252-A

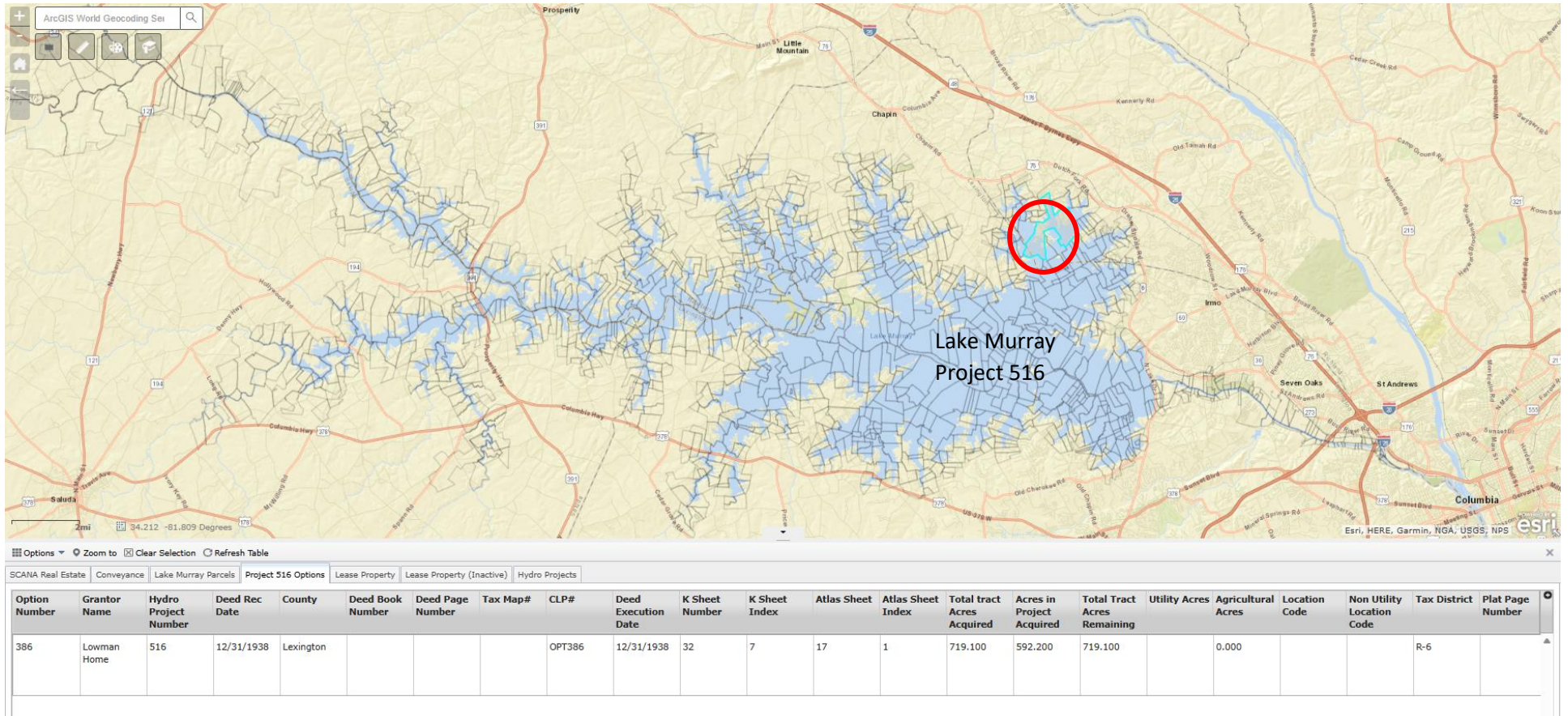


Figure 2. Location Map – Lowman Home Tract, Option 386