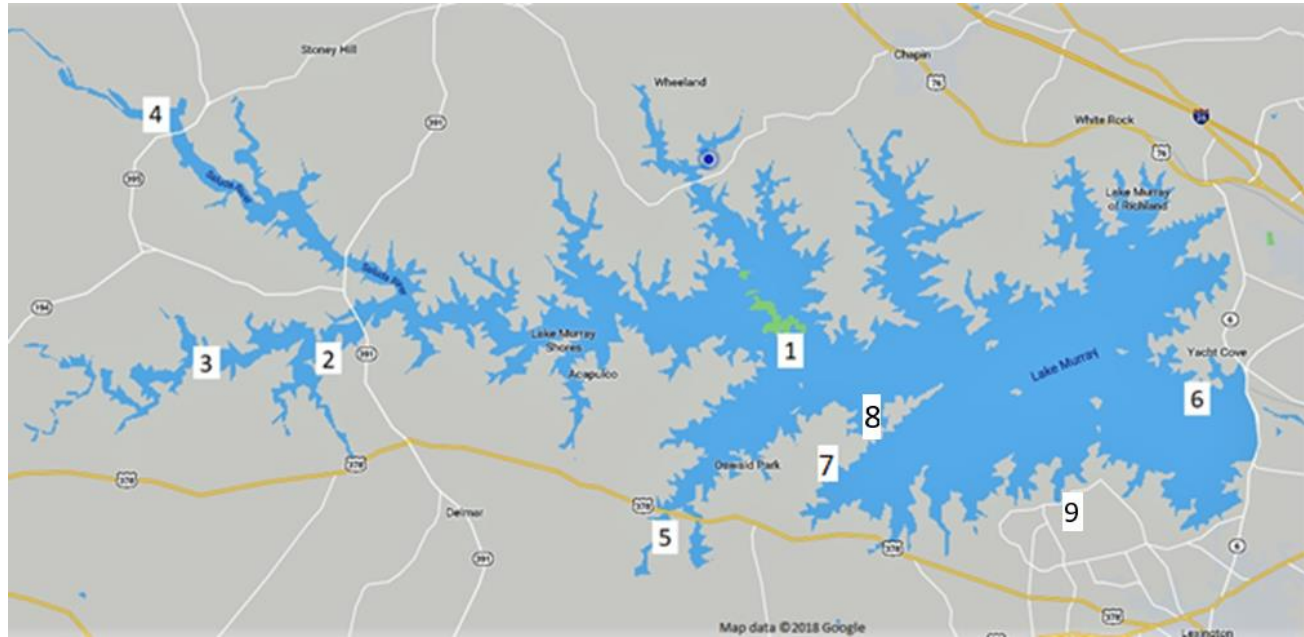


## March 2024 to March 2025 Water Testing Results



**Location**

***E. Coli* Levels**

**Phosphorous Levels**

		<b>March 2024</b>	<b>May 2024</b>	<b>July 2024</b>	<b>Sept 2024</b>	<b>Nov 2024</b>	<b>March 2025</b>		<b>March 2024</b>	<b>May 2024</b>	<b>July 2024</b>	<b>Sept 2024</b>	<b>Nov 2024</b>	<b>March 2025</b>
1	Dreher Island	Low	Moderate	Low	Low	Low	Low		Low	Low	High	Moderate	Low	Low
2	Clouds Creek at Mount Willing Rd. Bridge	Low	Low	Low	Low	Low	High		Low	Low	High	High	Low	Moderate
3	Little River Landing	Low	Low	Low	Low	Low	High		High	Moderate	High	High	High	High

4	Kempson Bridge	Low	Low	Low	Low	Low	Low		Low	Low	High	Moderate	Low	Low
5	Ridge Road Bridge	Low	Low	Low	Low	Low	High		Low	Low	High	High	Low	Moderate
6	Hollywood Road	Low	Low	Low	Low	Low	Low		Low	Low	High	Low	Low	Low
7	Pintail Lake Drive	Low	Low	Low	Low	Low	Low		Low	Low	High	Low	Low	Low
8	Koon Landing	Low	Low	Low	Low	Low	Low		Low	Low	High	Low	Low	Low
9	Beachcreek Rd.	NS	NS	NS	Low	Low	Moderate		NS	NS	NS	High	Low	Low

NS = Not Sampled

Here are the results of our water sampling from March 2024 to March 2025. In general, the *E. Coli* results were excellent for 2024 but some 2025 spring results have high *E. Coli* levels at sites #2, 3, and 5. The 2024 Total Phosphorous results had been low and much better than the previous year's levels. Then in July 2024, the Total Phosphorus samples all showed abnormally high levels of phosphorus. Several factors could be the cause of this including increased agricultural runoff, stormwater runoff from summer rains, and potential algal blooms triggered by warmer temperatures. The September 2024 samples were a mixed result with some Low phosphorous levels and some samples still had elevated levels. Results returned to good values in November 2024. The March 2025 results were a mixed result with higher phosphorous levels detected in the western parts of the lake. We will be paying attention to future sampling results to determine if these elevated levels persist and to better understand any seasonal or environmental patterns contributing to these changes. Beachcreek Rd. in Lexington was added as a sampling site in September. This site had seen a severe algal and weed bloom in August 2024.