

December 2012

## From the President's Desk

By Louise Love



As with all living things, Lake Murray evolves and changes over time. With such a large body of water and miles of shore line, Lake Murray has an array of environmental issues. Some areas of the lake deal with large populations of nuisance animals such as beaver and muskrat, while others have aquatic weeds, i.e. pond weed. Still in other areas where boat traffic is heavy, safety and erosion are big concerns. One situation that impacts all areas around the lake, however, is Lake Level, the issue LMA was founded on. Over the years, LMA has also evolved to address many concerns including safety, wildlife, education, and water quality. But the core issue has always been the level. For 5 years members of LMA worked tirelessly, attending scores of meetings on the re-licensing of the lake. The association was represented in over 7 committees to help determine the best future for the lake and her users. Barring drought conditions, a formula was devised that will accommodate higher levels for a longer period of time than in the past. Adaptive Management Teams were developed as part of the relicensing. These teams will be conducting analysis of items in the new license that required long term study. LMA Directors sit on many of these teams and will be a part of these future assessments.

Recently, our Government Liaison Committee has been looking at what may be the next area of concern: legislation that would permit or restrict the taking of water from the Saluda Basin and the lake.

One area recently investigated was the intakes

from municipalities. On first look it would seem that cities and towns with water plants drawing from Lake Murray would have a significant impact on the lake level. Here is what we have found. Between the four facilities, City of Columbia, City of West Columbia, City of Newberry, and Newberry County, the total FERC approved withdrawals amount to 174 million gallons per day (MGD). The current capacity of these facilities is 84 MGD, which means the municipalities have room to upgrade their facilities if needed. Currently, and this is interesting, the total average withdrawal from all four is 45 MGD. Now let's put that into what really matters to lake users. At 45 MGD, the lake will drop about .04" per day. If the facilities were upgraded to the approved withdrawal of 174 MGD, the level would be affected by .13" per day. The effect is minimal, especially when compared to what Mother Nature takes by evaporation. The yearly average for that is 147 MGD, or .11" and of course, that is much more dramatic during the summer months.

The Committee felt these findings were encouraging, in that it shows the lake can support the communities depending on it for water and still maintain levels that provide for its wildlife and human population.

The next step for our Government Liaison Committee is to study the State Water Plan to see what impact current and proposed laws will have on all bodies of water in South Carolina. Many concerns have been voiced in this area, and we will be bringing the results of our studies in future issues of the Lake Link.

*(Information on the intake facilities courtesy of SCANA'S Department of Fossil/Hydro Technical Services.)*



## **RICHLAND COUNTY ANNUAL MEETING "ARE YOU SMARTER THAN A LAKE MURRAY BOATER?"**

The annual Richland County meeting of Lake Murray Association, Inc. (LMA) was held September 18th at Lighthouse Marina, and the attendees enjoyed a tasty dinner of chili hot dogs before the meeting. Even though the weather threatened, as it so often does on the Lake, the evening and the Lake Murray sunset was perfect.

The Rusty Anchor hosted this meeting, providing an excellent facility that accommodated the 100 folks in attendance that evening. The program, "Are You Smarter Than A Lake Murray Boater?" was presented by David and Debra Allen, Coast Guard Certified Master Captains and Past Commanders of the Lake Murray Power Squadron. The audience enjoyed the interaction with the questions and answers, and even seasoned boaters learned some things about boating and safety.

Louise Love, President, welcomed two new board members and then Andy Hyman presented the thought provoking film, "Almost A Perfect Day", giving many a better understanding about environmental stresses that boaters experience while enjoying a typical day on the lake. SCE&G's Jim Landreth and Bill Argenteri were present and answered several questions from the audience.

LMA appreciates those contributing to the success of the meeting: Lighthouse Marina, Rusty Anchor Restaurant, Alodia's, The Southern Patriot, and members of the association who volunteered their time.

The Lake Murray Association, long established lake organization and considered the "Voice of Lake Murray", holds four public meetings annually with the general public in each of the counties represented around Lake Murray. You do not have to be a member to attend.

**Article provided by Joy Downs, LMA Executive Director**



### *Calendar of Events*

Date	Time	Location
January 8, 2013	7:00 pm	LMA Director's Board Meeting - Farm Bureau Bldg. Park Road, Lexington SC
February 8-10, 2013		Boat Show: Friday & Saturday 10-8pm; Sunday 10-5pm
February 11, 2013	7:00 pm	LMA Director's Board Meeting - Farm Bureau Bldg. Park Road, Lexington SC
March 11, 2013	7:00 pm	LMA Director's Board Meeting - Farm Bureau Bldg. Park Road, Lexington SC
March 19, 2013	7:00 pm	Saluda County Public Meeting at Spinner's
April 8, 2013	7:00 pm	LMA Director's Board Meeting - Farm Bureau Bldg. Park Road, Lexington SC
April __, 2013	7:00 pm	Lexington County Public Meeting (To be Announced)
May 13, 2013	7:00 pm	LMA Director's Board Meeting - Farm Bureau Bldg. Park Road, Lexington SC
May 18, 2013		LMA Pontoon Tour of Homes (To be Announced)
June 10, 2013	7:00 pm	LMA Director's Board Meeting - Farm Bureau Bldg. Park Road, Lexington SC

If you wish to be on the Directors' Meeting Agenda, please contact Joy Downs, 803-749-3888.

As members of the Lake Murray Association, you are invited to participate in any of the events shown above, including Board meetings. We encourage you to bring to the attention of the Board any issues or concerns regarding Lake Murray that you may have. Please call the Executive Director at 803-749-3888 at least two weeks in advance of meetings to be placed on the agenda; however, urgent concerns may be brought to the Board at any time. We suggest that complicated matters be sent to us in writing, including e-mail, so we may have a complete and accurate understanding of your concern.

# LAKE MURRAY ASSOCIATION GOLF TOURNAMENT

October 5th at Timberlake Golf Club

*by Ann Head*

Lake Murray Association held its annual Charity Golf Tournament on October 5, 2012 at the Timberlake Country Club. The golf course at Timberlake Country Club is a picturesque layout which trails along the shores of Lake Murray and highlights their brand new club house, which made it a very admirable place to host the event. The morning of the event did start out to be a bit frigid and foggy, then turned into the most perfect day for golfing. The format was Captain's Choice which allowed those with little golfing experience to play and be on an even par with those who are regulars of the game. It would not have been a success if it weren't for the players that participated, and of course the generosity of our corporate sponsors, who together made this charity tournament a profitable event for the Lake Murray Association.

Corporate sponsors were: Emerald Sponsors – Swingtech Golf, LMA; Gold Sponsors – LakeMurrayTimes.com, Sam's Fine Wine and Spirits, along with a dozen other businesses and individuals that pitched in with prizes such as a convertible automobile, and a \$10,000 hole-in-one purse that made every golfer on the course play to their very best ability. The drawing for prizes after the tournament was a great display from many of Lake Murray Association's very awesome supporters.

Thank you to all the many volunteers and LMA members that came to lend a hand along with the LMA board members Dave Landis, Tom Ruple, Ralph Crafton and Ann Head, who helped make this tournament such a success. We look forward to 2013 with great expectation, bringing our way another LMA Charity Golf Tournament. We are sure it will be another fun family event that will be enjoyed by all that come to participate. See you in 2013!!!



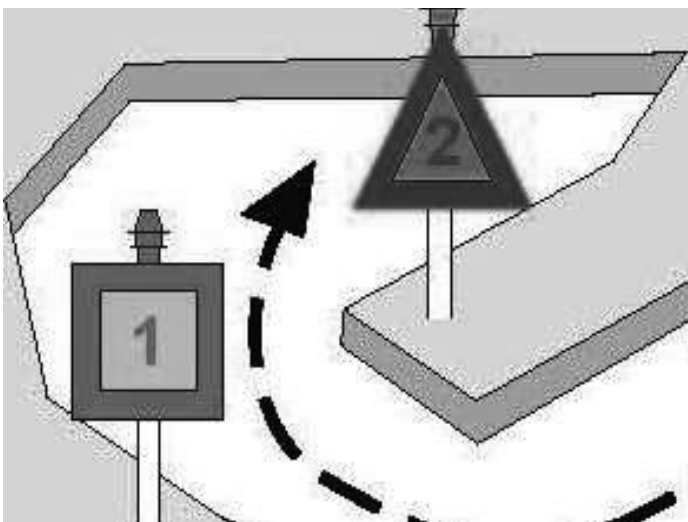
# Lake Reference Markers, Lights & Good Will

By Barbara Burchfield

Boating at night is not the same as day boating – it's pretty dark out there and it's easy to get disoriented. On Lake Murray we are fortunate to have a system of reference lights and markers to help us find our way during the day and at night. But this is also a story of community cooperation, unheralded dedication and civic service that every boater on Lake Murray should know about.

## What You Need to Know:

- Reference markers are not navigation markers. They do not mark safe water, but rather they mark a position and give you an idea of where you are on the lake - kind of like a road map.
- Reference markers are located onshore or near shore.
- Red, even numbered markers are a triangle shape.
- Green, odd numbered markers are a square shape.
- The green and red markers are on opposite sides of the lake. Lake Murray Power Squadron (LMPS) web site links to a map showing the marker & light locations: <http://www.lmpsonline.org/LMGoogle-Map.html>
- LMPS's web page <http://www.lmpsonline.org/re-flights.htm> gives marker numbers, light sequences, locations and GPS coordinates for Lake Murray reference markers and lights.
- There are three components to the reference system: the lights, the markers and the structure (poles that hold them in place).



## An Idea Becomes Reality

Plans for the reference light system began in March 1993 when a group of Lake Murray citizens concerned about boating safety, particularly at night, formed a committee. Led by Miriam Atria of Capital City/Lake Murray Country, the committee spent the next three years working hard with a great many stakeholders on the project and eventually presented the project to the legislative delegation for funding. In 1996, the reference light system project went from the drawing table to reality on the lake. Since then, Lake Murray Country has provided management, administrative and financial support to keep the reference marker light system operational as a community service (thank you!).

## Let's Talk About the Lights

The light system is now outdated and the lights have been replaced twice already by Lake Murray Country. Lee Ayers of Lake Murray Power Squadron (LMPS) says "The existing light fixtures hold six incandescent lights, like tiny Christmas lights, with a useful life of 3,000 hours to burnout." Converting to new LED units will be advantageous and cost effective in the long run. If you boat at night you may have noticed that a few of the old lights have been replaced with LED lights. A total of nine lake reference lights will be replaced by LED units this year, with the remaining 27 lights as they become available.

LED lights have more luminous range, use less energy, and have 10 times the useful hours, contributing to a reduction in maintenance hours and expense. Only seven reference lights are solar powered so far, and those are typically placed in areas that are difficult to access and without roads, like the islands. Lee Ayers points out that the reference lights are only one piece of safe navigation at night on the lake; boaters should be prepared because it's different after dark.

A big round of applause goes to LMPS, the organization that has been inspecting and maintaining the lighting system as a community service to boaters. LMPS members George Frederick and the late George Hoxie, who were on the original planning committee, founded the reference light system maintenance program in 1996. Dave Moxley, who has serviced the lights since 1998, says "The reference light system on the lake fundamentally provides boater safety, and the Power Squadron's primary purpose is promoting boating safety."

*(Lake Reference Markers continued on page 5 insert)*

# US NAVAL SEA CADETS CORPS & THE GREAT PORTAGE RACE

By Barbara Burchfield



The Great Portage Race took place Saturday, September 15, 2012, at Dreher Island State Park on a picture perfect Lake Murray morning. Twenty Naval Sea Cadets from Charleston's Hunley-Yorktown Division and Columbia's Palmetto Division assembled at the park to compete with each other in the Inaugural Great Portage Race.

Ten teams, spaced five minutes apart, left the starting line and hauled their canoes through the woods to launch them in the lake. That's not easy.

The course included four land portages and three waterborne paddle sections, testing the knowledge and canoe skills of the young 10 to 18 year old Cadets.

For some of the Cadets it was their first time to navigate the course, and throughout the event they displayed determination to reach the finish line. With varying degrees of ability and skill, all ten teams eventually finished the race. The last canoe, which may have been the least experienced of the young mariners, was greeted with loud whooping and applause from the crowd who lined up along the shore to meet them. Clearly, everyone who finished the grueling race was a winner.

Sponsored by the Navy League, SCE&G and others, this event was supported by Lake Murray Power Squadron, U.S. Coast Guard Auxiliary, and Lake Murray Association.



The Navy League supports youth through programs such as the Naval Sea Cadet Corps, Junior ROTC and Young Marines that expose young people to the values of maritime services.

Two U.S. Coast Guard Auxiliary boats supported the event by providing a marine safety zone for the Cadets and communications with Race Control. The Auxiliary assisted to locate, identify, and track the Cadets and provide course location sites to the Cadets in some cases. The Coast Guard Auxiliary boat crew who supported this event came from units in Orangeburg, Charleston, Lake Marion and Lake Wylie.

## LAKE MURRAY ASSOCIATION MISSION STATEMENT

To preserve, protect and enhance Lake Murray through conservation, science, education and good governance so that the lake remains clean, safe and beautiful for the community, users, visitors, area businesses and homeowners, both now and for generations to come.

## Getting to know our Corporate Members

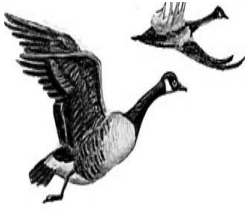
by Dave Landis

Our corporate sponsors are a special group and they are invaluable to the Lake Murray Association. Besides being supporters with their membership, they often help us with various projects. Our newest member is "Sam's Fine Wine and Spirits". Mark Murphy and Stephen Leicht are the owners and both live on the lake. Mark has been helping LMA for the past couple years, moving the Sea Cadets around during their survival week. Mark and Stephen were also major sponsors with LMA's golf tournament.

Sam's Fine Wine and Spirits is located in Lexington across from the Target store on Hwy 378. Their experienced staff enjoys helping customers pick out that special drink for any occasion. They have a great variety of wines from all over the world to choose from. Mark and Stephen have a second store "Village Spirits" in the Villages of Sandhills, and they are in the process of securing a third store in Lexington. You can visit them online at [samsfinewineandspirits.com](http://samsfinewineandspirits.com). Better yet, stop by one of their stores and pick up some spirits for the holidays.

# AWAY WITH PESKY GEESE

by Roy Parker



In cooperation with the Lexington Soil and Water Conservation District, Lake Murray Association has been evaluating an approach to deter nuisance geese from yards and docks. The deterrent being evaluated is

manufactured and supplied by the Ohio company Away with Geese. The units being evaluated are solar-powered amber lights that flash on a frequent basis at night. This disrupts the sleep pattern of geese and they will move to another location. The geese are not injured in any way.

The first evaluation was carried out with Ellen & Andy Faris at their home on Shore Road. The unit was placed in their yard where geese frequently left droppings. No conclusions can be drawn from this test, because the geese left the area shortly before the test began.

The lights are currently under evaluation at two other locations. A test is being conducted with John and Inga Rodgers on Smallwood Drive near Chapin. Their dock and ramp had a thick coating of geese droppings when the test began. They had tried dog and swan silhouettes on the dock with limited success. The light was placed at the edge of the water near the dock. I feel we have had initial success at this location. About three weeks after the light was placed there, I saw no evidence of fresh geese droppings on the dock or ramp. This test will continue in order to determine further effectiveness.

The final test location is with Lake Murray Marina and Yacht Club at 1600 Marina Road. They have a serious problem with geese droppings on their extensive docks. They have to hose off their docks on a regular basis to keep them usable for customers. We attached a light at the most visible point for their docks. It appears that the geese are being deterred, but have not completely vacated using the docks. We will continue this evaluation before making any final conclusions.



[www.lakemurrayassociation.com](http://www.lakemurrayassociation.com)

Lake Murray Association's new QR Code for quick access to the website.

# LMA WATER TESTING

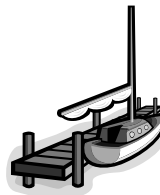
by Ken Fox



2012 is the seventh year that LMA has conducted water testing of Lake Murray. During this time, testing has been conducted from the dam all the way to the upper Saluda and Little Saluda Rivers. Over six hundred tests have been performed. None of these tests have shown any impairment to the waters of Lake Murray. Below are the latest test results that were completed in October, 2012.

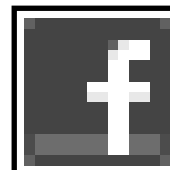
Cove	Pollutant	September
A Stony Point	Total Phosphorous	.50
	Fecal Coliform	1
B Cedar Cove	Total Phosphorous	.050
	Fecal Coliform	2
C Yacht Cove	Total Phosphorous	.050
	Fecal Coliform	1
D Beech Creek	Total Phosphorous	.050
	Fecal Coliform	1

## DOCK SIGNS



Some years ago, our four County Sheriffs found that having home addresses visible from the lakeside aided calls for assistance. If you have to call for help, having your address lakeside and roadside can save precious minutes. Dock signs are easy to order and are delivered to a location near you. Check LMA's website: [www.lakemurrayassociation.com](http://www.lakemurrayassociation.com)

A special property check is available if your business or residence borders Lake Murray. If you would like for the Sheriff's Patrol on Lake Murray to check your property while you are away, go online to <http://www.rcsd.net/propertycheckform-lm.htm> or call 803-576-3000.



**Like the Lake Murray Association on Facebook !**

## CORPORATE SPONSORS

The following businesses are affiliate members. Affiliate members are identified as sponsors of LMA since they directly support us with larger membership dues. We extend special thanks to our affiliate members. Let us support them in return.

Ameriprise Financial, Ryan Westmoreland	803-957-1912
Automated Business Services, Rick Jones	803-781-3033
Bio Gator, Wallace Hubbard	803-749-1140
Buffalo Creek Marina, Charles Higgins	803-466-5335
Callaway Construction Company, Wes Lawson	803-753-7948
Carts Plus, Ed Horton	803-359-5505
Chapin Boat Center, Greg Hood	803-537-9227
Dantzler's Lawn & Landscaping, Chad Dantzler	803-917-7983
David's Fine Jewelry, Matthew Baughman	803-732-1235
DuBose Home Inspections, Inc., David DuBose	803-276-3250
First Citizens Bank, Ballentine, Rick Pascall	803-781-3414
Giles Brothers Allstate, Craig Giles	803-798-4800
Harbour Watch on Lake Murray, Phil Savage	803-920-1224
Jakes Landing, Archie Trawick, Jr.	803-359-9268
Jesse T Reese Insurance, Larry Dodson & Tim Reese	803-799-9206
Kaminer Heating & Air, Inc. Woody Kaminer	803-772-9140
Kelley-Moser Consulting, William Moser	803-808-0338
Lake Murray Boat Club, Jon Dukes	803-407-2828
Lake Murray Chamber of Commerce, Debra Lauer	803-356-2151
Lake Murray Cruises, "Spirit of LM" Ken Colton	803-730-3044
Lake Murray Power Squadron, Lee Ayers	803-781-9157
LakeMurrayTimes.com, Ann Head	803-422-5709
Lake Tours, Inc. "Southern Patriot", Jay Downs	803-749-8594
Lexington Chamber of Commerce, Melanie Sandor	803-359-6113
Lighthouse Marina, Jason Lusk	803-749-1554
Medicine Mart Pharmacy, Gerald Culler	803-231-2003
Morgan Stanley Smith Barney, Byron Williams	803-251-3285
Pine Press Printing, Lori Harmon	803-359-9162
Pontoon Rentals & Tours, Ken Hardee	803-413-1693
Richland County Sheriff's Dept., Sheriff Leon Lott	803-576-3031
Rotary Club of Chapin, George McConnell, Jr.	803-345-2890
Russell & Jeffcoat, Barbara Seward	803-361-1254
Sam's Fine Wines & Spirits, Mark Murphy	803-808-1830
Sargeant Air Conditioning, Bob Thompson	803-520-6279
Sea Tow Lake Murray, John Altenberg	803-957-0664
Senior Express Transportation Services, David Smith	803-926-7933
Southern First Bank, Nancy Hutto	803-520-5390
Spinner's Resort & Marina, Theresa LeJohn	803-532-5300
Swingtech International, Ralph Crafton	803-359-2880
Timberlake Country Club, Inc. Michael Kletter	803-345-9909
Well Pets Veterinary Clinic, Scott Christy	803-732-3883
Wingard's Nursery, Delores Steinhauser	803-359-9091
Woodley's Garden Center, Rick Woodley	803-407-0601

### IMPORTANT PHONE NUMBERS

<b>Lake Level</b>	<b>800-830-5253</b>
<b>Lake Murray Information</b>	<b>803-217-8399</b>
<b>Dock Permits</b>	<b>803-217-9221</b>
<b>DNR Information</b>	<b>803-734-3888</b>
<b>Marine Office</b>	<b>803-951-2564</b>
<b>Richland County Sheriff's Office</b>	<b>803-576-3000</b>
<b>Lexington County Sheriff's Office</b>	<b>803-359-8230</b>
<b>Newberry County Sheriff's Office</b>	<b>803-321-2211</b>
<b>Saluda County Sheriff's Office</b>	<b>803-445-2112</b>
<b>Sea Tow Lake Murray</b>	<b>803-957-0664</b>
<b>SC Legislative Info.</b>	<b>800-734-2145</b>
<b>DNR Nuisance Animals</b>	<b>800-922-5431</b>
<b>Lake Property Check</b>	<b>803-576-3000</b>

## OFFICERS and EXECUTIVE COMMITTEE:

Louise Love, President	803-781-6536
David Landis, 1 <sup>st</sup> Vice President	803-520-7509
Andy Hyman, 2nd Vice President	803-932-7707
Joy Downs, Executive Director	803-781-8411
Bill Mathias, Recording Secretary	803-957-5829
Tom Ruple, Treasurer	803-732-1342

## COMMITTEE CHAIRPERSONS:

### Environmental

Roy Parker, Chair	803-603-8988
Ken Fox	803-604-1409

### Lake Level

Executive Committee, Joy Downs	803-749-3888
--------------------------------	--------------

### LAKE≈LINK

Lucy Wingard, Chair & Editor	803-318-6267
Bill East, Vice Chair	803-781-7711

### LMA Funded Projects: Osprey Nests & Wind Socks

Ken Fox, Chair	803-604-1409
----------------	--------------

### Government Liaison

Bill Mathias, Chair	803-957-5829
Curtis Hipp, Vice Chair	803-794-9012
Joy Downs	803-781-8411

### Membership

Sean Abrams, Chair	803-334-4410
Aleda Anderson	803-781-2343
Russ Jernigan	803-359-7598
Sharon Miles	803-233-3746

### Publicity

Jim Nelson, Chair	803-422-7647
-------------------	--------------

### Safety

Lee Barber, Co-Chair	803-749-1841
Lucy Wingard	803-318-6267
Ken Fox	803-604-1409
Barbara Burchfield	803-240-9264
Andy Hyman	803-932-7707

### Nominating Committee

Bill East, Chair	803-781-7711
Aleda Anderson	803-781-2343

### Special Events: Boat Show, Dock Signs, Tour of Homes, Golf Tournament and Ladies Day on the Lake

Ken Fox, Chair	803-604-1409
Don Tyler	803-932-4891
Ralph Crafton	803-359-5361

### Web Site Manager

Tom Ruple	803-732-1342
-----------	--------------

### At Large

Joe Agnew	803-781-0399
Ann Head	803-309-7595
Suzi McPherson	803-520-6265
Gerry Spragg	803-730-3614